



# Welcome! We will get started momentarily.

- Using Chat, please enter your name and organization.
- How to use Chat:
  1. Click on the Chat icon.
  2. Select who you want to send your message to (individual or everyone).
  3. Type and send your message.
- Please use Chat to submit questions for our speakers.

# Nursing Home Quality Essentials Spotlight: Infection Prevention

**A Nursing Home Corporation's Approach to Vaccine Implementation:  
Strengthening Care Through Protection**

January 23, 2025

Gina Anderson, RN, BSN, Program Specialist



WE'RE BACK!

# NURSING HOME QUALITY ESSENTIALS



## SPOTLIGHT: INFECTION PREVENTION

**Tuesdays & Thursdays | 11 a.m. MT / Noon CT**

As part of a contract extension from CMS, we're thrilled to relaunch Nursing Home Quality Essentials, focusing on infection prevention and control!

Join us twice a week for engaging 30-minute sessions tailored for long-term care providers. Each session will spotlight a new aspect of infection prevention, with actionable insights and strategies to integrate directly into daily practices.

Topics may include vaccines, healthcare-acquired infections, rehospitalizations, NHSN reporting, health literacy and more — each aimed at enhancing your infection prevention efforts.

**SCAN TO REGISTER**



or go to

[www.telligenqiconnect.com/calendar](http://www.telligenqiconnect.com/calendar)



## Vaccinate & Protect!

Telligen's [Adult Vaccine Toolkit](#) compiles practical resources for nursing homes in their efforts to improve vaccination rates.

Telligen's [Vax Hub](#) provides additional on-demand tools, resources, and learning modules.

Together, these resources empower facilities to safeguard our most vulnerable populations.



➤ A Nursing Home Corporation's  
Approach to Vaccine Implementation:  
**Strengthening Care Through Protection**

# Objectives

- At the conclusion of this presentation, participants will be able to:
  - Identify best practice strategies which may increase vaccination rates within their organization
  - Recognize actions to enhance their immunization program

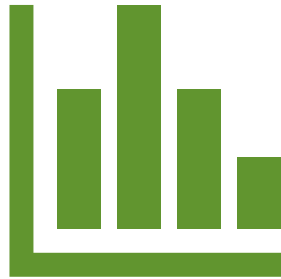
# A Message Worth Relaying

## Why Get Vaccinated?



- Prevent infections – decrease severity of infections
- Boost immunity
- Sustained protection against severe disease
- Decrease risk of [long COVID](#)
- Protect the most vulnerable

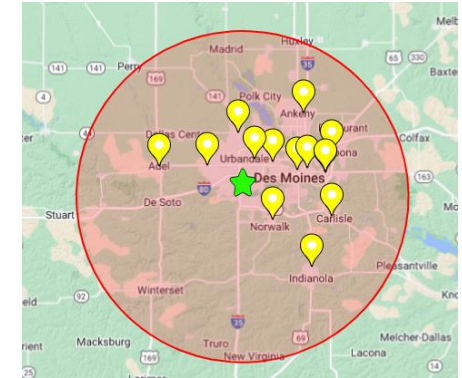
# Telligen QI Connect™ Supports Nursing Homes with Low Vaccine Rates



NHSN data reveals low COVID-19 vaccine uptake among residents



Support for nursing homes with addressing COVID-19 vaccine challenges and implementing mitigation strategies



Vaccine clinic partners identified in Telligen regions



## Waterfall Chat

### Instructions:

Start typing an answer into chat but **don't send!**

In chat, type in:

**What are your immunization program challenges?**

Do not hit send until given the signal!



# Today's Speaker(s) from The Evangelical Good Samaritan Society



DeeAndra Sandgren, BSN, RN, DNS-CT  
Chief Nursing Officer  
Corporate

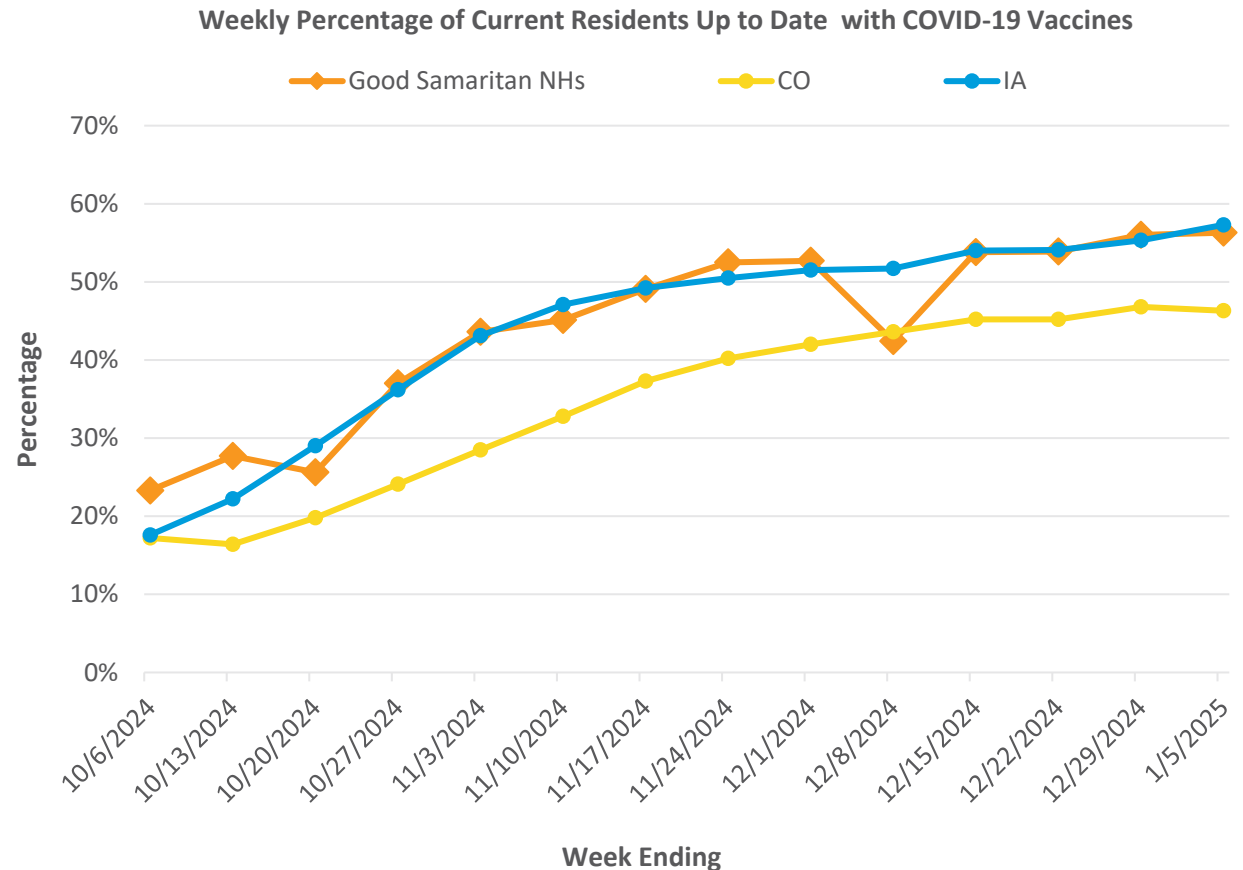


Hali Reiter, RN, LTC-CIP, CDONA  
Manager, Accreditation & Infection Prevention  
Corporate

Nadya Mamlock, RN  
Infection Prevention Specialist  
Ottumwa, Iowa Nursing Home

# Good Samaritan Society Corporate Strategies

- Tried and true vaccination strategies using the four C's:
  - Engage residents and families
    1. Connection
    2. Collaboration
  - Start the process early
    3. Champions
  - Access to vaccinations
    4. Convenience
  - Track Vaccination rates and tactics



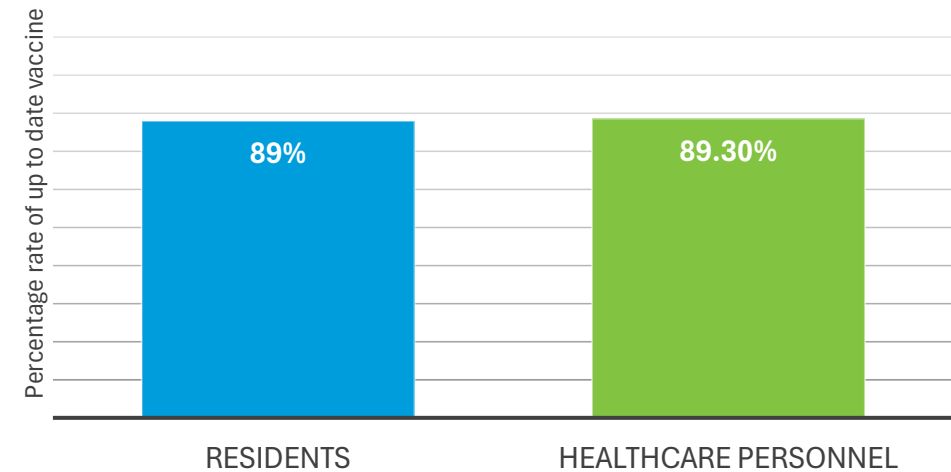
[Tried and true vaccination strategies to protect residents this holiday season](#)

Data source: [Centers for Medicare & Medicaid Services Data](#)

# Good Samaritan Society – Ottumwa Nursing Home in Iowa



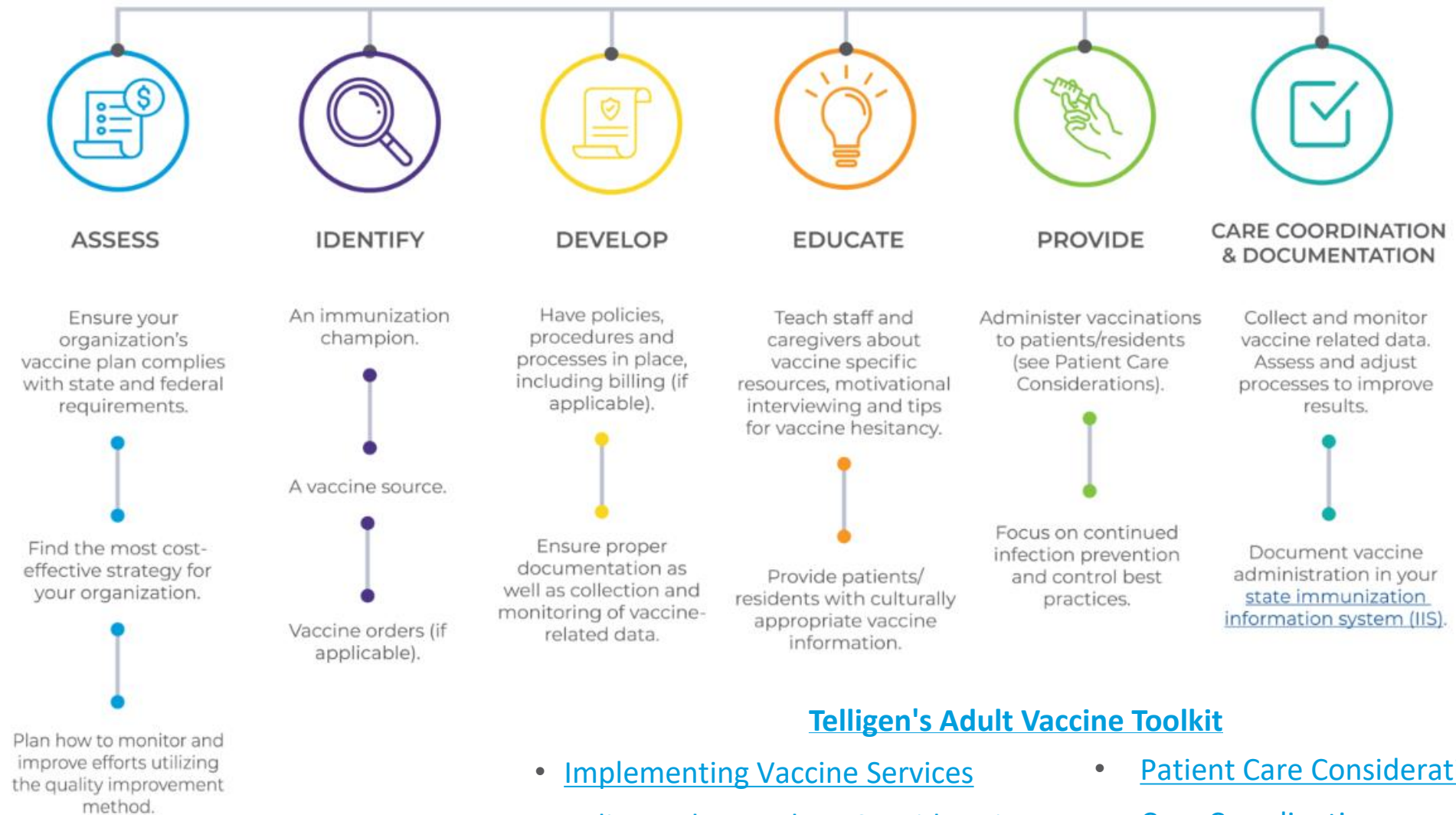
**Good Samaritan - Ottumwa, Iowa  
2024-2025 COVID Vaccine rate  
As of 12/29/2024**



- Conduct COVID vaccine clinics in response to each new CDC recommendation
- Review all new admissions weekly and administer vaccinations as necessary

> Questions?

# Next Action Steps - Organize the Immunization Program Goal



## Telligen's Adult Vaccine Toolkit

- [Implementing Vaccine Services](#)
- [Patient Care Considerations](#)
- [Policy and Procedure Considerations](#)
- [Care Coordination](#)

# Additional Resources

- [Vax Hub | Telligen QI Connect](#)
- [Infection Prevention and Control Resources | Telligen QI Connect](#)
- [Address Vaccine Hesitancy](#)
- [Immunization Quality Improvement for Providers Strategies | IQIP | CDC](#)



# Thank You for Attending Today's Session!

Your feedback is valuable!

Please stay on to complete a brief 5-question assessment.

Your anonymous feedback helps us improve future sessions.

An open-ended question is included for additional comments.

**Thank you again for your participation!**



# Contact Us



- General Inquiries | [QIConnect@telligen.com](mailto:QIConnect@telligen.com)
- [www.telligenqiconnect.com](http://www.telligenqiconnect.com)
- Nursing Home Team | [nursinghome@telligen.com](mailto:nursinghome@telligen.com)



LinkedIn: <http://www.linkedin.com/company/Telligen-qi-connect>



Facebook: <https://www.facebook.com/telligenqiconnect>

# NURSING HOME QUALITY ESSENTIALS

SPOTLIGHT: INFECTION PREVENTION



**Tuesdays & Thursdays | 11 a.m. MT / Noon CT**

**Don't miss out on these upcoming offerings:**

**Tuesday, January 28, 2025**

The Link Between Infection Prevention and Social Drivers of Health in Resident Care

**Thursday, January 30, 2025**

Optimizing Infection Prevention and Control: Leveraging Assessment and Audit Tools

**Tuesday, February 4, 2025**

Resilience in Action: Nursing Home Teams Share Strategies for Sustaining Respiratory Vaccination Rates

**SCAN TO REGISTER**



or go to

[www.telligenqiconnect.com/calendar](http://www.telligenqiconnect.com/calendar)

Access past NHQE recording topics here:  
[Resources | Telligen QI Connect™](#)



This material was prepared by Telligen, a Quality Innovation Network-Quality Improvement Organization, under contract with the Centers for Medicare & Medicaid Services (CMS), an agency of the U.S. Department of Health and Human Services (HHS). Views expressed in this material do not necessarily reflect the official views or policy of CMS or HHS, and any reference to a specific product or entity herein does not constitute endorsement of that product or entity by CMS or HHS. This material is for informational purposes only and does not constitute medical advice; it is not intended to be a substitute for professional medical advice, diagnosis or treatment. 12SOW-QIN-01/20/25-5541